

TURKISH RED CRESCENT

SOCIOECONOMIC EMPOWERMENT PROGRAM

Activity Report



TOPLUM
MERKEZİ



TÜRK
KIZILAY



Ankara
January 2023



**TOPLUM
MERKEZİ**



**TÜRK
KIZILAY**

TURKISH RED CRESCENT

SOCIOECONOMIC EMPOWERMENT PROGRAM

Activity Report

SOCIOECONOMIC EMPOWERMENT PROGRAM

ACTIVITY REPORT

Turkish Red Crescent Publications
Ankara, January 2023

This report cannot be reproduced and distributed in any way without the permission of the Turkish Red Crescent.

Report Content

Turkish Red Crescent Socioeconomic Empowerment Program Staff

Developed By

Cihan ARSU, Çağlar DÜNDAR, Didem TUNCEL, Ebrar YILMAZ, Fatma Rana CEYLANDAĞ KARBAN, Gözde KARATAŞ AYDIN, Güneş VEZİR, HümeYra DOĞANAY, Mehmet Altay SEVİNÇ, Melike BÜYÜ, Şeyma Buse GÖRÜCÜ

Graphic Design

Necip Eren Koçyiğit

Turkish Red Crescent - Community Based Migration Programs
Mustafa Kemal Mh. 2143. Sk. No:16 Çankaya/ANKARA
E-Mail: info@kizilay.org.tr

All rights belong to the Turkish Red Crescent.

Citation can be made by indicating the source. Permission should be obtained from the Turkish Red Crescent to reproduce some or all of the book.

table of contents

FOREWORD	3
GENERAL INFORMATION	4
About Turkish Red Crescent	4
About Community-Based Migration Programs and Community Centers	4
About Socioeconomic Empowerment Program	5
Referral to Employment Sub-Program	6
Entrepreneurship Sub-Program	12
Agriculture and Livestock Sub-Program	16
Good Practice Examples	17
Projects Conducted under the Socioeconomic Empowerment Program (2015-...)	21
Our Colleagues Contributed to the Program	28
Our Partners and Supporters	34

foreword

Access to socio-economic well-being gains importance within the scope of “Supporting Victims of Migration” and “Combating Poverty and Hunger”, which are the main objectives of the TRCS Strategic Plan 2021-2030 Enhancing Social Resilience.

The main objective of TRCS Community-Based Migration Programs is to strengthen the physical, psychological, social and economic well-being of communities and individuals and make sustainable contributions to enhancing social resilience.

Socio-economic Empowerment Program, which operates under the TRCS Community-Based Migration Programs, aims to support the access of local people, Syrians under temporary protection and other foreign nationals under international protection to regular livelihoods, increase individual resilience and support Turkey’s labour force policies in line with both the TRCS Strategic Plan 2021-2030 and the goals and objectives of the Community-Based Migration Programs. In line with these objectives, activities are carried out for the beneficiaries with a focus on developing vocational capacity and language skills, orientation to employment and protecting rights in working life, and supporting the entrepreneurship of vulnerable individuals.

As Socio-economic Empowerment Program, we are pleased to share with you the Program Activity Report, which includes the implementation processes, concrete outputs, multiplier effect and general evaluations of the projects carried out with public institutions, non-governmental organizations, private sector representatives, and international stakeholders and aimed to provide beneficiaries with access to sustainable socio-economic empowerment opportunities. We hope that this report, which includes the results of comprehensive field studies, will lead and shed light on similar internal and external studies.



general information

About Turkish Red Crescent

The Red Crescent is a voluntary social service organization with legal personality, subject to the provisions of private law, non-profit, free of charge and working for the public interest.

The Red Crescent, established on June 11, 1868 under the name of “Ottoman Aid Society for Wounded and Sick Soldiers”, was named as “Ottoman Red Crescent Association” in 1877, “Turkey Red Crescent Association” in 1923, “Turkey Red Crescent Association” in 1935 and “Turkey Red Crescent Society” in 1947. The organization was named “RED CRESCENT” by the great leader Atatürk.

The purpose of the Red Crescent is to try to prevent or alleviate individual sufferings without any discrimination, to protect life and health of a person, to ensure that his personality is respected and to try to bring mutual understanding, friendship, respect, cooperation and constant peace among community. The Red Crescent is a symbol of solidarity in times of need, equality in times of suffering, humanity, neutrality and peace in the heat of war.

Turkish Red Crescent, one of the most respected and powerful institutions of the humanitarian sector in the international arena, shares the basic principles of the International Red Crescent-Red Cross Community. These are the principles of humanity, being non-discriminatory and charitable, impartiality, independence, unity and universality

The organization of the Turkish Red Crescent consists of Headquarters and branches. The duties at all levels of the Red Crescent other than the General Directorate are carried out voluntarily.

Turkish Red Crescent, which carries out activities at national and international level in

the fields of disasters, safe blood supply, social services, migration services, education, youth and volunteering services, is developing its service range day by day.

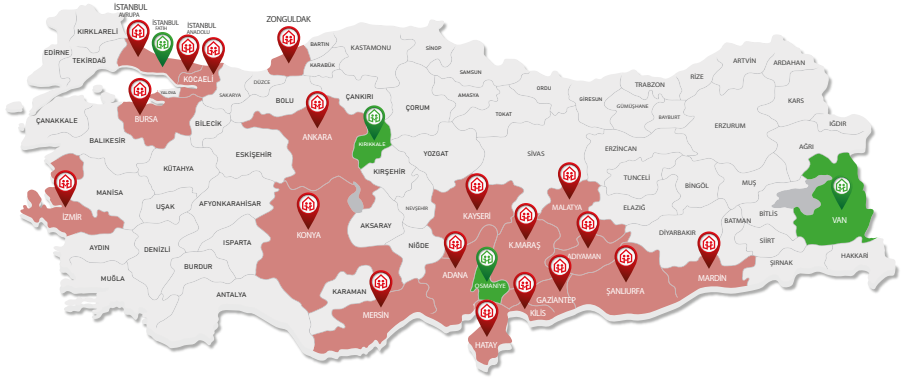
About Community-Based Migration Programs and Community Centers

As a result of the political crisis and conflicts that started in Syria on March 15, 2011, millions of people were displaced and became in need of humanitarian aid. With this migration crisis, Turkey hosts to around 4 million migrants and refugees. Within the scope of the response to the migration crisis, the first Turkish Red Crescent Community Center was opened in Şanlıurfa province on January 20, 2015 in line with the needs of migrants, refugees and local people living outside the camp. As of 2020, the services of Turkish Red Crescent Community-Based Migration Programs reach the beneficiaries through 19 community centers in 18 provinces across the country.

The key objective of Community-Based Migration Programs is to contribute to the community resilience and culture of peaceful co-existence by empowering the physical, psychological, social and economical conditions of all vulnerable groups and individuals.

The priority audience of the services of our Community Centers, supported by many national and international non-governmental organizations, is vulnerable individuals such as disabled individuals from all ages, the elderly and people exposed to violence. Our Community Centers aim to provide their services to all those in need who live in the region they serve, regardless of religion, language or race.

19 Active Community Centers



About Socioeconomic Empowerment Program

Socioeconomic Empowerment Program aims to ensure the self-sufficiency of people under temporary protection and international protection in Turkey as well as the host communities by improving their professional capacities to acquire professions, providing Turkish language competency and supporting entrepreneurship. Within the scope of Socioeconomic Empowerment Program, three main sub-programs are being implemented:



Guidance to Employment Sub-Program

- Labour Market Supply and Demand Analysis
- Profiling
- Vocational Training
- Turkish Language Courses
- Job and Vocational Consultancy
- Capacity Building Trainings



Entrepreneurship Sub-Program

- Labour Market Supply and Demand Analysis
- Entrepreneurship Support Component
- Homebased Production, Small Scale Agricultural and Livestock Production Support Component
- Cooperative Support Component



Agriculture and Livestock Sub-Program

- Labour Market Supply and Demand Analysis
- Theoretical and Applied Trainings

Referral to Employment Sub-Program

With the referral to employment sub-program it is aimed that people with appropriate profiles are directed to job opportunities according to the labor force market needs and/or that they are provided with trainings and competence development services which will ensure their employability to reach abovementioned opportunities. Moreover, the studies for adaptation to business life are also carried out to ensure that employed people work formally and that they are permanent in business life within the scope of this sub-program.

In order to direct the workforce needed by the labor market to employment, labor supply and demand sides are analyzed in two directions. As part of the labor force demand analysis, studies for creating profile of beneficiaries, personal competence assessment, Turkish language placement and personality inventory are carried out to determine their occupational and social competencies, background and language levels. Within the scope of labor force demand analysis, in order to detect the needs and requests of

employers as well as the available sectors and positions in the market following activities are carried out: the identification of hard- to-fill positions and vacancies, gathering of employer demands, determination of competency needs as well as conducting information and awareness activities through workshops with stakeholders and employers.

As a result of these analysis, beneficiaries are included in the vocational trainings which are provided to meet market needs and soft skill trainings. By the help of these trainings, their competency development is ensured and beneficiaries with suitable profiles are directed to vacancies. At this point, information about legal and cultural working conditions provided to beneficiaries directed for employment, and for the employers, during work permit application processes consultation services are provided and work permit fees are paid. Moreover, with Turkish language courses beneficiaries' easy access to labor force market and building of social cohesion is aimed.

Profiling

All beneficiaries who wish to benefit from socioeconomic empowerment services are registered in Community Centers and then they are provided with counseling services and are profiled in accordance with their qualifications. Individual profiles contain the demographic information, as well as educational status, graduation information, profession, previous work experience and other qualifications and are processed into the database. Appropriate activities are determined and an individual action plan is implemented according to the profile characteristics of the beneficiaries.

Labor Supply and Demand Analysis

An analysis of the target audience (labor supply) is carried out to determine the professional courses, supports and programs needed by the beneficiaries locally. Within the scope of this analysis, general profiling of the target audience is carried out. In the profiling studies, beneficiary information in the database, beneficiary information obtained especially through the Social Cohesion Assistance (SUY) program conducted by the Turkish Red Crescent, data obtained within the scope of protocol and data shared with relevant public institutions and organizations, and information about the target audience accessible from external sources are used. In addition, data on the supply market is collected by discussing it with public organizations and NGOs. With this study, information about the general educational status, professional information and other qualifications of the target audience is compiled.

By analyzing the Labor Demand, the labor force profile needed at the local level is determined. In this context, the leading and/or sectors where the target audience can be employed in accordance with the profile are determined, and employers in these sectors, the positions that have difficulties in employment, the problems experienced in employment are identified,

and why these difficulties arise, how they can be solved and how the Community Center will contribute to this solution are specified. While these studies are being conducted, one-to-one employer interviews are carried out and surveys are made. In addition, workshops are organized for referral to employment. During these workshops and visits, studies are carried out to determine the situation of sectors and employers, and labor force needs demands/workforce profile expectations from employers or stakeholders are collected. In addition, workforce demand analyzes made by İŞKUR and other relevant institutions are evaluated. These collected data constitute an input for the determination of the competence-based workforce needs on a provincial basis.

Vocational Training

In line with the workforce needs determined by the Community Centers in the field, vocational trainings are organized in collaboration with Ministry of National Education General Directorate of Lifelong Learning Public Education Centers, İŞKUR, universities, chambers and private sector. The contributions of these vocational trainings to the beneficiaries are the execution of the monitoring and evaluation processes after the trainings, the inclusion of the beneficiaries in the employment orientation activities, Turkish and social skills trainings in order to facilitate employment for the beneficiaries in need, and work permit consultancy services and fee provision services at the employment stage.

Textile Clothing Manufacturing Technology:



7.199 people

In the branches under the field of Clothing Production Technology, in line with the needs of the labor market, The aim is to develop the professional qualifications of the beneficiaries and to make them competent in the field of textile. Vocational trainings in this area are provided at all Community Centers.

Construction-Machine and Metal Technology:



2.463 people

In the branches under the field of construction-Machine and Metal Technology, the aim is to train qualified individuals who have gained required professional competence both in line with the sectoral needs as well as scientific and technological developments.

Informatics Technology:



2.522 people

It is aimed to raise individuals who can perform basic operating system controls and office applications to acquire basic knowledge and skills related to the field and branch, to adapt innovation and change, and to have professional competencies by acquiring the attainments that allow them to develop their personal abilities.

Beauty and Hair Care Services:



3.019 people

It is aimed to train qualified professionals who have gained the necessary competencies in line with the needs of the sector, scientific and technological developments in the fields of hair care, skin care, body care and make-up, which are under the field of Beauty and Hair Care Services.

Handicrafts Technology:



5.607 people

Handicrafts Technology is an occupational training field that rather covers the trainings for women beneficiaries. It involves the process of women who become manufacturer through hand labor and product sales.

Marketing and Retail:



120 people

It is aimed to increase their employability by supporting individuals to develop their competencies for the needs of the sector, which is located under the name of marketing and retail fields.

Food and Beverage Services:



3.124 people

It is the field that provide education and training for gaining competencies to members of professions such as cook in the branch of kitchen, confectioner in the branch of pastry, and service personnel in the branch of service under Food and Beverage Services field.

Number of Participants in Vocational Trainings:

24.254

Total Budget:

26.572.534,91 TL

Total 24.254

Female 15.809
Male 8.445

Host Community 4.666
Syrian 18.657
Other 931

18-29 8.756
30-39 7.476
40-49 5.616
50-59 2.145
60+ 261



Turkish Language Courses

Turkish Courses at Basic Level

In order to both support the social coherence and remove language barrier, Turkish A1-A2-B1-B2-C1 levels grammar and language practicing courses are provided for both to support the cohesion of beneficiaries and provide them livelihoods.

Total Number of Participants in Basic Level Turkish Language Courses:

14.982

Budget:

875.214,71 TL



Business and Vocational Turkish Language Courses

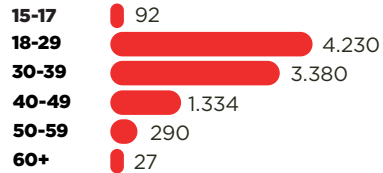
For the purpose of increasing the employability of beneficiaries and adaptability to business life, different modules on a sectoral basis for professional Turkish trainings are provided for the job seekers involved in the labor market and/ or who are already working as white collar, blue collar and agricultural workers.

Number of Participants in Business and Vocational Turkish Language Courses :

9.353

Total Budget:

513.852,42 TL





Business and Vocational Consultancy

As part of the labor force demand analysis, studies for creating profile of beneficiaries, personal competence assessment, Turkish language placement and personality inventory are carried out. Within the scope of labor force supply analysis; the identification of hard-to-fill positions and vacancies, collecting the employer demands, and determination of competency needs as well as workshop with stakeholders and employers are all carried out. As a result of these analysis, beneficiaries are included in trainings, Turkish language courses, Business and Professional Turkish courses, and Soft Skills Trainings intended for covering the market needs. After these processes beneficiaries are guided to the employers and for the vacancies. At this point, information about legal and cultural working conditions are provided to the beneficiaries who were guided for employment, and consultation services are provided for the employers during work permit application process. Moreover, work permit fees are also paid under this program.

Number of Beneficiaries Whose Work Permits Were Received:

15.957

Number of Beneficiaries Being Guided to Registered Employment:

26.742

Consulting for the Employer:

11.233

Number of Participants in Social Skills Development Trainings:

12.085

Number of Participants in Informative Seminars:

5.812

Budget:

8.657.233,00 TL

Entrepreneurship Sub-Program

Basic and advanced entrepreneurship trainings are provided through collaboration with universities, civil society organizations and techno-parks in line with the needs analysis done for local entrepreneurship by Community Centers. Following the trainings, entrepreneurship camps are organized to create business and feasibility plans to the beneficiaries. The ones with sustainable business plans are determined and in-kind supports are provided for them. In the meantime, mentorship and incubation assistance is provided on the areas of legal actions, marketing, finance and business management during the incorporation process.

Additionally, support for Homebased Production, Small-Scale Agricultural and Livestock Production including material, equipment and consumables are given to the beneficiaries who participated in vocational trainings and agricultural and husbandry trainings carried out at Community Center and received certification to produce at home and create livelihoods.



Entrepreneurship Support Component

Within the scope of the Socioeconomic Empowerment Program covering the provinces of Adana, Ankara, Gaziantep, Hatay, İzmir, İstanbul, Mersin and Şanlıurfa in cooperation with the Union of Chambers and Commodity Exchanges of Turkey (TOBB), in order to transform Social Assistance into sustainable livelihoods, beginner level entrepreneurship training, advanced level entrepreneurship training for beneficiaries whose entrepreneurial idea is suitable entrepreneurship trainings, agriculture-food-water entrepreneurship workshop, idea generation camp, business plan preparation camp, trainings related to incubation support and mentoring support were provided.

76 people in 8 cities were provided with in-kind grant support, company installation support and accounting support in total.

In order to mitigate the effects of COVID-19, 5,000 TL per person provided to 51 entrepreneurs in the month of June 2020; 7,500 TL cash support were given to 48 entrepreneurs in the month of January 2021.

In order to ensure the sustainability of the activities of the supported entrepreneurs, capacity building trainings for 52 entrepreneurs and mentoring supports with in-kind grants of 15,000 TRY for 20 entrepreneurs were provided during the period of September - December 2021.

Number of People Receiving Training:

843

Number of People Preparing A Business Plan

383

Number of Participants In The Mentoring And Incubation Program:

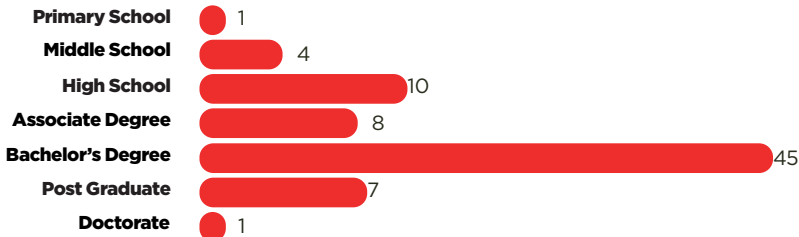
77

Number of People Supported By In-Kind Grants:

76

Budget:

6.940.141 TL



Homebased Production, Small-Scale Agricultural and Livestock Production Support Component

The program supports the individuals who have an occupational skill in certain subject but do not have an income, to generate an income through homemade production and small-scale agricultural and livestock production that they will perform by means of the occupational skill they have acquired. Thus, it is aimed that individuals with limited access to financial sources are reinforced economically by earning a side income to household income, become self-sufficient, and their life standard is improved.

In order to reduce the effects of COVID-19 on the beneficiaries supported within the scope of the relevant component, capacity building trainings have been organized to expand sale channels and support product development.

In order to ensure the sustainability of the activities of the supported beneficiaries, capacity building trainings for 19 beneficiaries and in-kind support of 5,000 TRY for 27 beneficiaries were provided during the period of September – December 2021.

Number of People Supported by Digital Equipment:

55

Number of People Supported by In-Kind Grants:

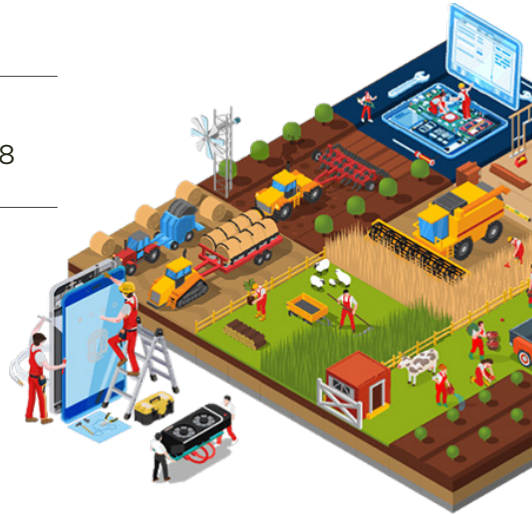
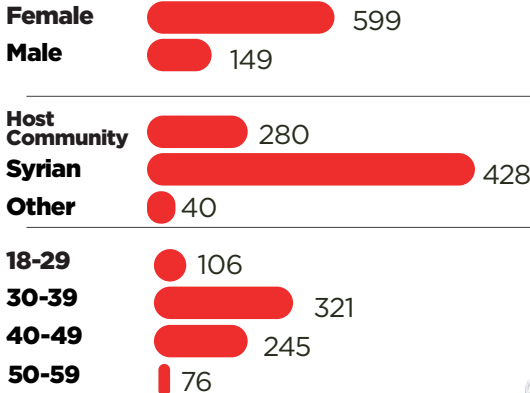
748

Number of Participants in Capacity Building Trainings (product development, sales, marketing, digitalization)

4.126

Total Budget:

12.706.695,51 TL



Cooperative Support Component

In order to ensure social cohesion and economic empowerment at the local level, it is aimed to design a sustainable, income-generating model for starting commercial activities by supporting social enterprises, cooperative initiatives and cooperatives, which are among socioeconomic solidarity models, and increasing the capacity of beneficiaries. It is aimed to improve and develop through the cooperative, which is a socioeconomic solidarity model in livelihoods. In this way, the production of the Community Center beneficiaries and the people in need will be supported, a sales mechanism will be established by ensuring the sale of legal products, and course activities of the Community Centers will be turned into more sustainable and effective.

Cooperatives Supported

Cemre Cooperative:

As part of the cooperation with the Cemre Cooperative located in Eskişehir, capacity of women among migrants and local community have been improved through vocational trainings, and they were provided to have income through selling their products over the cooperative. Within the framework of this cooperation, Kızılay met the supplies and expenses needed during the vocational

trainings.

Limited Liabe Besni Economic Social Women's Initiative Production and Business Cooperative:

As part of the cooperation with the cooperative located in Adiyaman, the cooperative was funded by machinery and equipment to be enabled to make production in the field of textile. With these supports, migrant and local beneficiaries in the region have been included in the production network and they have been provided with income by getting a share of the profit along with the sale of manufactured products.

Bacıyan-ı Meram Women's Enterprise and Production Business Cooperative:

Within the scope of the cooperation with the cooperative in Konya, the products of immigrants and local people obtained in vocational training courses and Home-Based Production supports were sold through the cooperative and the income to be obtained was transferred to the beneficiaries through the cooperative.

Sabiha Gokcen Airport Transportation and Business Cooperative:

Within the scope of the cooperation with the cooperative in Istanbul, the beneficiaries of the Community Centers, immigrants and beneficiaries from the local community, who are in the appropriate profile, were guided to the vacant positions within the cooperative, and work permit fees were paid for the immigrants.



Projects for Cooperatives

Cooperative, Cooperative Initiative and Social Enterprise Capacity Building Project: Within the scope of the project funded by UNHCR, 10 cooperatives were selected by making an open call throughout Turkey, and as a result of the needs analysis studies carried out for these cooperatives, capacity building trainings, mentoring supports and in-kind machine and equipment supports are provided. Cooperatives supported under the project:

Limited Liabie Mutlu Beslen Agricultural Development Cooperative-Manisa

Limited Liabie Hemdem Women Entrepreneur Production and Business-İstanbul

Limited Liabie Development and Improvement of Women's Labor Agricultural Development Cooperative-Mardin

Limited Liabie Yesemek Women's Initiative Production and Communication Cooperative- Gaziantep

Producing a World Women's Initiative Production and Business Cooperative-Mardin

Hatay Altınöz Olive Labor Women's Initiative Production and Business Cooperative- Hatay

Limited Liabie Heart of Battalgazi Women's Initiative Production and Business Cooperative- Malatya

Havva Women Cooperative-İzmir

Kulu Women Cooperative-Konya

Limited Liabie Social Breathing Unhindered Life Women's Initiative-İzmir

Limited Liabie Handcrafted Women Entrepreneur, Production and Business Cooperative-Karabük

Strengthening the Socioeconomic Well-being of Communities through Agriculture Project: Within the scope of the project funded by World Vision International, trainings, mentoring and in-kind machinery and equipment supports were provided to the members of the Home-Based Production and Women's Hands Domestic Production and Business Cooperative operating in Şanlıurfa.

Seeding Hope for Şanlıurfa Project: Within the scope of the project funded by World Vision International, capacity building and mentoring supports are provided in order to make the activities of the Women's Hands Domestic Production and Business Cooperative sustainable, and the impact of the support is analyzed by conducting monitoring and evaluation activities.

Agriculture and Livestock Sub-Program

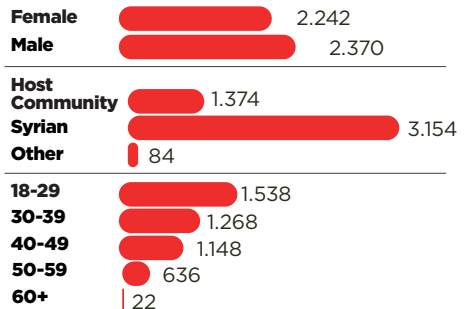
The aim of Agriculture and Livestock Program is to generate livelihoods through the utilization of information, experience and knowledge of beneficiaries in Turkey in food, agriculture and livestock sectors and to meet the local needs in the sector. Beneficiaries are provided with theoretical and practical trainings on agriculture and livestock in accordance with the collaborations with Provincial Directorates affiliated to Ministry of Agriculture and Forestry, local institutions, agricultural chambers, unions and universities. Beneficiaries having completed the trainings successfully are directed to employment or Homebased Production, Small-Scale Agricultural and Livestock Production support are provided for the beneficiaries that prefer to produce.

Number of Participants in Agriculture and Livestock:

4.612

Total Budget:

8.136.280,15 TL



Good Practice Examples

Qualified IT Personnel Training Program

The graduate beneficiaries gained qualification as SAP Consultant in the fields that SAP Turkey clients and business partners were in need of and that those beneficiaries were employed in suitable companies in collaboration with SAP Turkey. After approximately 7 months preparation process, 2.000 applicants were interviewed with various interview techniques and a total 100 people (25 people for each module including ABAB, BASIS, Cost Accounting and Financial Accounting) were aimed to be included in SAP ecosystem as consultants or under other vacancies.

In 2022, the course was held again in cooperation with Community Based Migration Programs, Kızılay Teknoloji AŞ and LUPE Danışmanlık.

80 trainees who successfully completed the interview process were included in the course in Financial Accounting, Advanced Business Applications Programming, Materials Management, Sales and Distribution, Production Planning modules. The employment process continues.

Certificate Programme for Business and Occupational Consultancy

Participation to Certificate Programme for Business and Occupational Consultancy Programme was ensured to carry out guidance to employment activities for beneficiaries more professionally and to improve personnel capacity, in collaboration with Sakarya University.

Business and Vocational Turkish Language Trainings

In collaboration with Ankara University TÖMER, it is aimed that beneficiaries involve in labor force market and become permanent in this market through providing business Turkish language trainings on sectoral basis for vocational training course participants of Community Centers; beneficiaries having a profile, with occupational skills and seeking job; and beneficiaries who have already involved in labor force market, who are white-collar, blue-collar and agricultural laborer.

Soft Skills Development Training

Soft Skills Training is to be carried out for beneficiaries at Turkish Red Crescent Community Centers to facilitate access of Syrians who live under temporary protection in Turkey, other foreign individuals and Turkish citizens to source of income. In this context, it is aimed that Turkish Red Crescent personnel provide trainings on the subjects such as CV Preparation, Interview Techniques, Career Planning, Life-long Learning, Strengths and Weaknesses Analysis, Business Life in Turkey, and Labor Law and Social Rights in Turkey to white-collar, blue-collar and agricultural laborer beneficiaries for them to involve easily in labor force market and become permanent in this market.

Digital Commerce Support

Digital Commerce Supports are provided for Entrepreneurship, Home-Based Production and Cooperative Support beneficiaries who are already producing, making sales in different channels or planning to sell in the near future, and considering e-sales as an income-generating and long-term business. Within the scope of the supports, training, mentoring, in-kind machine-equipment and platform membership supports are provided.



Employment-Oriented Vocational Training Projects

1- The following courses were provided: Wooden Frame Assembly under the collaboration of Gaziantep Community Center and Gaziantep Union of Chamber of Merchants and Craftsmen (GESOB), Natural Gas Interior Installation, Automotive Electrician, Steel Welding, Gas Metal Arc Welding (MIC-MAG), General Electric Arc Welding, Wooden Frame CNC Operator, CNC Counters and Programming, Domestic Air Conditioner Systems Installation, Shoe Sewing, Saddlery Cutter, Offset Printing Operator, Machine Maintenance and Repair Assistant Staff courses were given. A total of 343 people participated in the 17 courses, and 54% of the beneficiaries were employed in official companies.

2- Pipefitter, Web Design, Tire Sales, and Service Personnel courses were provided in collaboration with Ankara Community Center and Vocational Training and Small-Scale Industries Foundation (MEKSA). Totally 75 people participated to 3 courses and 20% of beneficiaries were officially employed in companies listed on KÜSGET Industrial Estate.

3- Gas Metal Arc Welding course was provided in collaboration with Konya Community Center and Önder Metal A.Ş. and Turkey Employment Agency Konya Provincial Directorate. 25 people participate at the first stage of the course and 40% of beneficiaries were officially employed in Önder Metal A.Ş. In the second stage, 25 people continue training and 50% of them will be officially employed at the end of the course.

4- Solar Panels Mounting, Maintenance and Repair Training is organized in collaboration with Sultanbeyli Community Center and Çataklı Enerji Eğitim Yayıncılık ve Danışmanlık Ticaret A.Ş while Argon Welding Training is organized in collaboration with UGETAM A.Ş. 25 people at a time participate to each training and 50% of the participants will be officially employed at the end of the training.

5- Employment Guaranteed Professional Culinary Trainings Project was carried out in collaboration with Ankara Community Center and Private Gastronomy Turkish Cuisine and World Cuisine Vocational Course (TCA). 16 people participated and 30% of them were officially employed in various organization. The cooperation with TCA continued in 2022, and 37% of the 19 beneficiaries who completed the course were employed.



6- Within the scope of cooperation with Ankara Chamber of Industry Continuing Education Center (ASOSEM) in Ankara Community Center, CNC Machine Operator Course, Electrical Panel Installer Course, Plastic Injection Operator Courses were held. 36% of the 28 beneficiaries who graduated from the courses were employed in various companies.

7- In cooperation with Adiyaman Community Center and Adiyaman Industry Development Center (ASGEM), Wood Sculpting Course, Women's Workwear Sewing Course, Weak Current Installer Course were opened, and 58% of the 53 people who completed the courses were employed in various companies.

8- In cooperation with Kilis Community Center and Kilis Provincial Directorate of Agriculture and Forestry, Vegetable Cultivation Course, Olive Cultivation Course and Herd Management Courses were opened, and 63 out of 88 people who completed the courses were employed.



9- Warehouse Staff Training Course was opened in cooperation with Bağcılar Community Center and BİM Birleşik Mağazalar A.Ş. 86% of 14 people who completed the course were employed to work within the company.

Product Sale-Oriented Vocational Training Projects

Products such as Art of Glass Processing, Mother of Pearl Inlaid, Amigurumi, Cloth Bag, Tile, Regional Food etc. are manufactured at Community Centers. It is ensured that manufacturing beneficiaries come together with various companies. The manufactured products are sold and the revenue is delivered to beneficiaries by the companies.

Projects Conducted under the Socioeconomic Empowerment Program (2015-...)

Project Number	1
Project Name	Addressing Vulnerabilities of Refugees and Host Communities in Five Countries Affected by the Syria Crisis (MADAD) Project
Partner	International Federation of Red Cross and Red Crescent Societies (IFRC)
Funder	European Union
Project Provinces	Adana, Ankara, Bursa, Gaziantep, Hatay, Istanbul, Izmir, Kahramanmaraş, Kayseri, Kilis, Kocaeli, Konya, Mardin, Mersin ve Şanlıurfa
Project Duration	01.01.2017 - 28.02.2021 (50 Months)

Project Number	2
Project Name	Community Centre Evening and Weekend Language Courses Project
Partner	International Organization for Migration (IOM)
Funder	International Organization for Migration (IOM)
Project Provinces	Adana, Bursa, Gaziantep, Hatay, Istanbul, Izmir, Kahramanmaraş, Kilis, Konya, Mersin ve Şanlıurfa
Project Duration	01.08.2018 - 31.05.2019 (10 Months)

Project Number	3
Project Name	Hope in Kitchen Project
Partner	World Food Organization (WFP)
Funder	World Food Organization (WFP)
Project Provinces	Ankara, Istanbul
Project Duration	01.02.2019 - 31.10.2019 (9 Months)

Project Number	4
Project Name	Emmergency Appeal - Europe: COVID-19 Outbreak Project
Partner	International Federation of Red Cross and Red Crescent Societies (IFRC)
Funder	International Federation of Red Cross and Red Crescent Societies (IFRC)
Project Provinces	Adana, Ankara, Bursa, Gaziantep, Hatay, Istanbul, Izmir, Kahramanmaraş, Kayseri, Kilis, Kocaeli, Konya, Mardin, Mersin ve Şanlıurfa
Project Duration	01.06.2020 - 31.12.2021 (18 Months)

Project Number	5
Project Name	Strengthening the Socio-Economic Welfare of Communities Through Agriculture Project
Partner	World Vision International
Funder	World Vision US
Project Provinces	Şanlıurfa
Project Duration	01.12.2020 - 31.03.2021 (4 Months)

Project Number	6
Project Name	Strengthening the Community Resilience through Disaster Awareness Trainings and Livelihood Initiatives
Partner	United Nations Development Programme (UNDP)
Funder	United Nations Development Programme (UNDP)
Project Provinces	Adana, Ankara, Bursa, Gaziantep, Hatay, Istanbul, Izmir, Kahramanmaraş, Kayseri, Kilis, Kocaeli, Konya, Mardin, Mersin ve Şanlıurfa
Project Duration	01.01.2021 - 30.06.2021 (6 Months)

Project Number	7
Project Name	Enhancing Sustainable Economic Opportunities and Self-Reliance for Refugees and Turkish Citizens in a More Inclusive Hatay Labour Market
Partner	Danish Refugee Council (DRC)
Funder	German Development Bank (KfW)
Project Provinces	Hatay
Project Duration	01.01.2021 - 30.09.2021 (9 Months)

Project Number	8
Project Name	Cooperative, Cooperative Initiative and Social Enterprise Capacity Development Project
Partner	United Nations High Commissioner for Refugees (UNHCR)
Funder	United Nations High Commissioner for Refugees (UNHCR)
Project Provinces	Gaziantep, Hatay, Istanbul, Izmir, Konya, Malatya, Manisa, Mardin
Project Duration	01.01.2021 - 31.12.2021 (12 Months)

Project Number	9
Project Name	Country Plan Project
Partner	International Federation of Red Cross and Red Crescent Societies (IFRC)
Funder	International Federation of Red Cross and Red Crescent Societies (IFRC)
Project Provinces	Adana, Ankara, Bursa, Gaziantep, Hatay, Istanbul, Izmir, Kahramanmaraş, Kayseri, Kilis, Kocaeli, Konya, Mardin, Mersin ve Şanlıurfa
Project Duration	01.03.2021 - 31.12.2021 (10 Months)

Project Number	10
Project Name	Socio-economic Empowerment Support for Those Living in Urban Areas
Partner	International Federation of Red Cross and Red Crescent Societies (IFRC)
Funder	Japan Embassy
Project Provinces	Ankara, Gaziantep, Istanbul, Konya
Project Duration	01.05.2021 - 28.02.2022 (10 Months)

Project Number	11
Project Name	Resilience Strengthening of Migrants and Vulnerable Host Communities in Kilis Project
Partner	Malteser International
Funder	Nachbar in Not (NiN)
Project Provinces	Kilis
Project Duration	01.06.2021 - 30.09.2021 (4 Months)

Project Number	12
Project Name	Ensuring Dignity and Resilience of Vulnerable Communities through Socioeconomic Empowerment and Protection Support
Partner	World Vision International
Funder	World Vision US
Project Provinces	Şanlıurfa
Project Duration	01.06.2021 - 31.03.2022 (10 Months)

Project Number	13
Project Name	Increasing the Resilience of Refugees and Host Community Members in the Turkish Labor Market - Implementation of Livelihood Activities Project
Partner	International Labour Organization (ILO)
Funder	BPRM
Project Provinces	Adana, Ankara, Gaziantep, Hatay, Istanbul, Izmir, Mersin ve Şanlıurfa
Project Duration	01.10.2021 - 31.12.2021 (3 Months)

Project Number	14
Project Name	Formal Employment Support in Agriculture Sector Project
Partner	Agricultural Credit Cooperatives of Turkey
Funder	World Bank
Project Provinces	Adana, Adiyaman, Bursa, Gaziantep, Mersin, İzmir
Project Duration	15.02 2021 - 31.12.2023 (36 Months)

Project Number	15
Project Name	Support for Transition to Labor Market Project
Partner	World Bank
Funder	European Union
Project Provinces	İstanbul, Bursa, İzmir, Kocaeli, Konya, Adana, Gaziantep, Şanlıurfa
Project Duration	10.05.2022 - 31.12.2024 (32 Months)

Project Number	16
Project Name	Migration Plan
Partner	IFRC
Funder	IFRC
Project Provinces	Adana, Ankara, Bursa, Gaziantep, Hatay, İstanbul Anadolu, İstanbul Avrupa, İzmir, Kahramanmaraş, Kayseri, Kilis, Kocaeli, Konya, Mardin, Mersin, Şanlıurfa
Project Duration	01.01.2022 - 31.12.2022 (12 Months)

Project Number	17
Project Name	Operating Two Community Centers in Kocaeli and Gaziantep to Provide Protection and Education Services for Syrian Refugees in Turkey
Partner	Qatar Charity
Funder	Qatar Charity
Project Provinces	Gaziantep, Kocaeli
Project Duration	01.03.2022 - 31.10.2022 (8 Months)

Project Number	18
Project Name	Operating A Community Centers* in Kilis to Provide Protection and Education Services for Syrian Refugees in Turkey
Partner	Qatar Charity
Funder	Qatar Charity
Project Provinces	Kilis
Project Duration	01.03.2022 - 31.03.2023 (12 Months)

Project Number	19
Project Name	Seeding Hope for Şanlıurfa II
Partner	World Vision International
Funder	World Vision US
Project Provinces	Şanlıurfa
Project Duration	01.04.2022 - 31.03.2023 (12 Months)

Project Number	20
Project Name	Enhancing Socioeconomic Empowerment Opportunities For Migrant And Turkish Women In Ankara Labour Market Project
Partner	Taipei Economic and Cultural Mission in Ankara
Funder	Taipei Economic and Cultural Mission in Ankara
Project Provinces	Ankara
Project Duration	01.02.2022 - 31.12.2022 (11 Months)

We would like to thank our colleagues who contributed to the program...

- Abdulkadir Akıncı
- Abdullah Yusuf Bircan
- Abdulmutalip Güneş
- Abdulsamed Kara
- Abdulsemet Tekin
- Abdülkerim Din
- Ahlem Özdemir
- Ahmad Mahli
- Ahmet Akbaba
- Ahmet Alkan
- Ahmet Çakmak
- Ahmet Düzgören
- Ahmet İnce
- Ahmet Sağlam
- Ahmet Suat Erbişim
- Ahmet Yiğit
- Ali Efe Erbil
- Ali Eser
- Ali Güneş
- Ali Orhan
- Ali Öztürk
- Ali Sürmeli
- Ali Uslu
- Ali Yılmaz
- Arif Kökçeli
- Aycan Gönen
- Ayşe Nur Karaçalı
- Ayşe Sayar Fere
- Ayşe Soydaş
- Ayşegül Eryiğit
- Azimet Burcu Ak
- Başak Boran
- Belgin Kaplan
- Bengü Erzenoğlu
- Burak Demirer
- Burak Ekinci
- Burak Peker
- Burak Tunca
- Burcu Bor
- Burçin Kumral Akbulut
- Burhan Alagöz
- Buse Kuzey
- Bünyamin Şerbetçioğlu
- Büşra Elmadağlı
- Büşra Kirit
- Caner Gül
- Cansu Aybacı
- Cemil Akgöz
- Cemil Minaz
- Ceren Dönmez

- Ceyda Dumlupınar Gntay
- Cihan Arsu
- Cihan Őahin
- aęlar Dndar
- aęrı Kse
- Damla Barlak
- Damla alık
- Davut Duran
- Davut Karahan
- Deniz Aygl TaŐkiran
- Dicle Aktay
- Didem Tuncel
- Dilara Kızıl
- DurmuŐ Trk
- Duygu Aktrk
- Ebrar Yılmaz
- Ebru zcan
- Ece Ceren Doęar
- Eda Gez
- Ekrem Kaytar
- Elin TaŐkın
- Elif Banu DurmuŐ
- Elif Irmak Erkek
- Emel IŐık
- Emine Ayanoęlu
- Emine Ece zkan
- Emre Arvas
- Emre Can Mergen
- Emre Kılı
- Emre Murat
- Emre Sayęan
- Enes Emre KarataŐ
- Ercan zoban
- Erdem plen
- Ersin Aksoy
- Ersun Ően
- Esin Demircioęlu
- Esra Arpacı
- Esra Aruk
- Esra zcan
- Esra Yavuz
- Eyll ay
- Ezgi Baęcı
- Fatıma Fizgeli
- Fatih Alper Akalın
- Fatih Birni
- Fatih Ertrk
- Fatma Afet ErmiŐ
- Fatma Beyaz
- Fatma Gezer
- Fatma zgven avuŐ
- Fatma Rana Ceylandaę Karban
- Ferhat Karacaoęlu
- Feride zdaę
- Furkan Karaduman
- Furkan Yrk

- Gizem Birginal
- Gizem Nur Kaplan
- Gökhan Kıran
- Göksen Yenigül
- Gözde Karataş Aydın
- Gülay Arık
- Gülbahar Aktürk Usta
- Gülçin Ünsal
- Gülgez Ağbaba Erođlu
- Gülhan Atilla
- Gülistan Al
- Gülşah Yıldırım
- Gülşen Karakuş Saraç
- Güneş Vezir
- Hacer Meltem Ünal
- Hafize Ece Yılmaztürk
- Hakan Ceylan
- Hakan Palalı
- Halil Aykutlu
- Halil Dikbaş
- Halime Dalkıran
- Halime Yağcıođlu
- Halit Burak Tanman
- Halit Kaya
- Haluk Fırat
- Hamit Kılıç
- Handan Arslan
- Harun Gül
- Harun Hakçı
- Hasan Celalettin Kalender
- Hasan Kara
- Haşim Hicazi
- Hatice Nur Kübra Yücesoy
- Hatun Özer
- Havva Caner
- Hayriye Tırnova Yazıcı
- Hicret Ardıç
- Hilal Kulaberođlu
- Hilal Sevinç
- Huriye Gençtürk
- Huriye Nurcan Elsıkma
- Hümeıra Dođanay
- Hüsametın Kavalcı
- Hüseyin Furkan Menekşe
- Hüseyin Kara
- Işıtan Dıncel
- İldem Emen
- İlhan Kılıç
- İlker Özdaş
- İpek Ayrancı
- İpek İltaş Gümüş
- İpek Sabuncu
- İsmail Çölkesen
- İsmail Özlü
- İsmet Turhan
- İzzet Yalçın

- Kamil Erdem Güler
- Kamil Yücel
- Kazım Kerem Coşkun
- Korkut Soner Gürsul
- Kübra Emine Kaplan
- Kübra Özer
- Kübra Öztürk
- Kübra Şahinbay
- Lidya Duran
- Lütfiye Sinem Dirikolu
- Mehmet Altay Sevinç
- Mehmet Demirel
- Mehmet Fatih Aslan
- Mehmet Fatih Yıldırım
- Mehmet Furkan Dünder
- Mehmet Gök
- Mehmet Mermer
- Mehmet Oğuzhan Bostancı
- Mehmet Sapu
- Mehmet Toy
- Mehmet Yıldırım
- Mekiye Demir
- Melike Büyü
- Melisa Şentürk
- Meltem Değerli
- Menar Yumuşak
- Mert Saraç
- Merthan Gözener
- Merve Arslantaş
- Merve İmamoğlu Özgür
- Merve Kılıç
- Merve Nur Gül Sevinç
- Merve Renan Türkkulu
- Mevlüde Akyol Şahin
- Mine Akdoğan
- Muhammed Fatih Hacımuhammed
- Muhammed Salih Teber
- Muhammet Beşer
- Muhammet Nurallah Demir
- Muhammet Remzi Aktaş
- Muhammet Sefa Gürbüz
- Muhammet Yusuf Salın
- Murat Baturay
- Murat Küçük
- Murat Şimşek
- Murat Yılmaz
- Murteza Tepe
- Musa Andaç
- Mustafa Alkan
- Mustafa Aytekin
- Mustafa Karaca
- Mücahit Ula
- Nadide Nurçe Ersoy
- Nafi Güner
- Nazlı Merve Erkan
- Nebiye Altınkaynak
- Necip Eren Koçyiğit

- Nejla Kara
- Neslihan Çimen
- Nesrin Ergül
- Nesrin İbiş
- Nihat Kandırmaz
- Nilay Yavuz
- Nilüfer Yılmaz
- Niyazi Kadir Kamış
- Nurcan Özdemir
- Nurgül Serder
- Oğuz Sorhun
- Oğuzhan Haluk Sarıkoç
- Oğuzhan Uslu
- Onur Karataş
- Ömür Başış
- Ömür Can Öner
- Özge Akpınar
- Özge Nur Yenipınar
- Özgün Özen
- Özgür Nuri Demir
- Özlem Birbiri Kuyucu
- Özlem Fırat
- Özlem Karabıyık
- Pınar Boz
- Pınar Tuncer Uluer
- Rabia Erdoğan
- Rabia Sare Ayar
- Rami Koçak
- Rıdvan Buğrahan Parlak
- Ruşen Çetinkaya
- Sadettin Hakan Atik
- Said Atçeken
- Salih Gündü
- Samet Günc
- Samet Kaya
- Sara Lajin
- Seçil Yiğit
- Seda Salın
- Sedat Can
- Sefa Bayram
- Selim Mengü
- Semra Karaboğa Taşkiran
- Serdar Toprak
- Serhat Deniz
- Sertaç Açıkgöz
- Sevinç Kereci
- Seyit Ahmet Kara
- Sibel Çelik
- Sinem Günal
- Solmaz Bulut
- Soner Amat
- Süheyla Degeç
- Sümeyra Taşcıoğlu
- Şahan Koçak
- Şahinaz Can
- Şemsettin Çetin

- Şerife Didem Yurdal Demir
- Şeyma Atçeken
- Şeyma Buse Görücü
- Şima Untuç
- Talip Gezici
- Tenadi Gölemerz Abdullah
- Tunahan Altundaş
- Umut Kılınç
- Umut Yıldız
- Usame Çolakođlu
- Ümit Karaođlan
- Veysi Yüce
- Vildan Adayolu
- Volkan Akça
- Yalçın Mert
- Yasemin Yaman
- Yasin Kuş
- Yeliz Yün
- Yelmiz Hatık
- Yunus Yılmaz
- Yurdanur Özgür
- Yusuf Avşar
- Zeynep Hande Kar
- Zeynep Meltem Torun
- Zeynep Ördek
- Zeynep Pirođlu
- Zeynep Uyđun

Our Partners and Supporters



TURKISH RED CRESCENT

SOCIOECONOMIC
EMPOWERMENT PROGRAM

Activity Report



Ankara
January 2023